



FortiGate/FortiWiFi® 30E

High Performance UTM
for Small Networks



FortiGate/FortiWiFi 30E

The FortiGate/FortiWiFi 30E are compact, cost effective, all-in-one security appliances that deliver Fortinet's Connected UTM. Ideal for small business, remote, customer premise equipment (CPE) and retail networks, these appliances offer the network security, connectivity and performance you need.

High Performance Network Security

Built on the foundation FortiOS 5, the FortiGate/FortiWiFi 30E series provides an integrated set of essential security technologies to protect all of your applications and data. You get advanced threat protection, including firewall, application control, advanced threat protection, IPS, VPN, and web filtering, all from one device that's easy to deploy and manage. With our FortiGuard® security subscription services you'll have automated protection against today's sophisticated threats.

Advanced Features

The FortiGate/FortiWiFi 30E offers beyond the industry's best firewall with the latest in Advanced Threat Protection including Sandboxing and anti-bot protection, Feature Select Options for simplifying configurations and deployments, and Contextual Visibility for enhanced reporting and management.

VDOMs on the FortiGate/FortiWiFi 30E let you segment networks to enable guest and employee access, or protect things like cardholder data. You get the flexibility to match your business needs and meet compliance standards like PCI and HIPAA.

Highlights

Firewall Performance	IPS Performance	Interfaces
950 Mbps	600 Mbps	Multiple GE RJ45

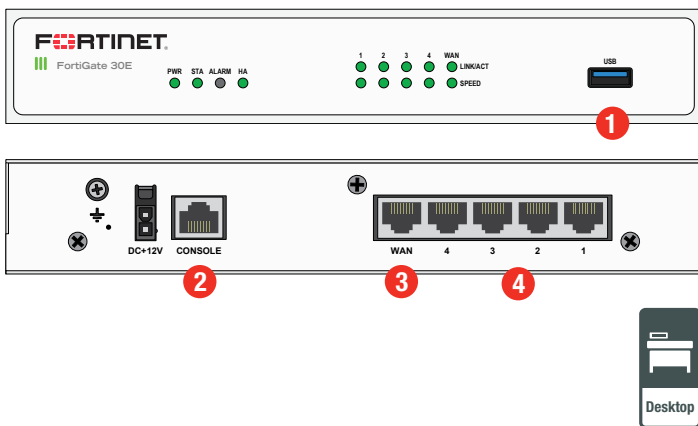
Features & Benefits

- High performance UTM — firewall, VPN, IPS, application control, web filtering, antivirus, antispy, DLP and more
- Runs on FortiOS 5 — the most powerful security operating system in the world delivers more protection for fighting advanced threats and visibility with deep contextual information



HARDWARE

FortiGate 30E



Interfaces

1. USB Port
2. Console Port
3. 1x GE RJ45 WAN Port
4. 4x GE RJ45 Switch Ports

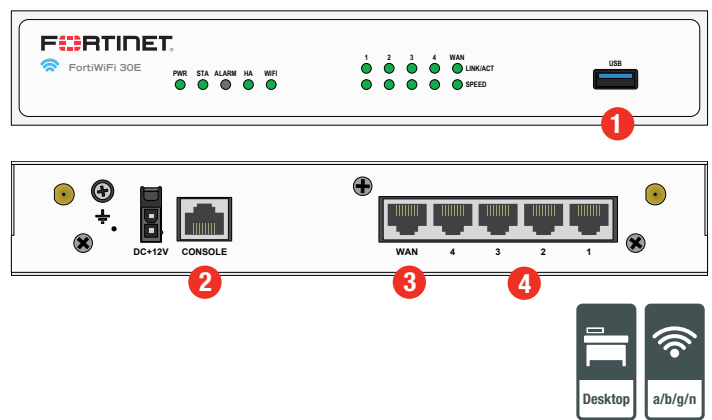
Install in Minutes with FortiExplorer

The FortiExplorer wizard enables easy setup and configuration coupled with easy-to-follow instructions. FortiExplorer runs on popular mobile devices like Android and iOS. Using FortiExplorer is as simple as starting the application and connecting to the appropriate USB port on the FortiGate. By using FortiExplorer, you can be up and running and protected in minutes.

Wireless and 3G/4G WAN Extensions

The FortiGate supports external 3G/4G modems that allow additional or redundant WAN connectivity for maximum reliability. The FortiGate can also operate as a wireless access point controller to further extend wireless capabilities.

FortiWiFi 30E



Interfaces

1. USB Port
2. Console Port
3. 1x GE RJ45 WAN Port
4. 4x GE RJ45 Switch Ports

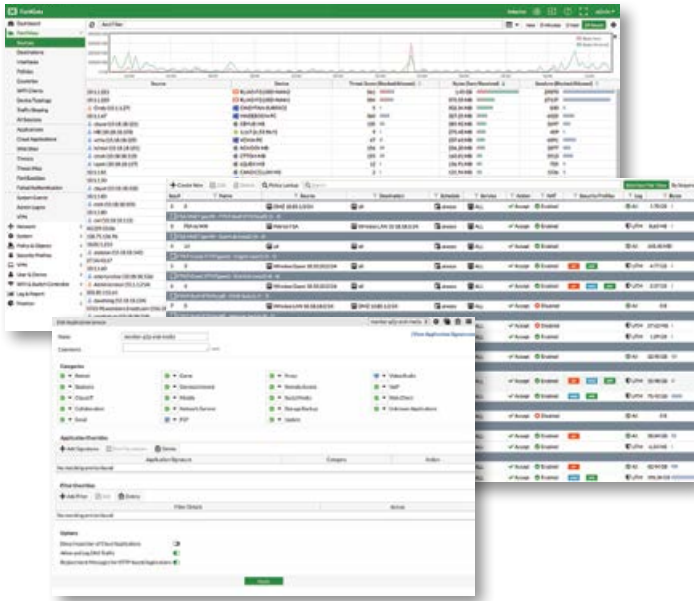
Compact and Reliable Form Factor

Designed for small environments, you can simply place the FortiGate/FortiWiFi 30E on a desktop. It is small, lightweight yet highly reliable with superior MTBF (Mean Time Between Failure), minimizing the chance of a network disruption.

Superior Wireless Coverage

A built-in dual-band, dual-stream access point with internal antennas is integrated on the FortiWiFi 30E and provides speedy 802.11n coverage on both 2.4 GHz and 5 GHz bands. The dual-band chipset addresses the PCI-DSS compliance requirement for rogue AP wireless scanning, providing maximum protection for regulated environments.

SOFTWARE



FortiOS Management UI —
FortiView, Policy Table and Application Control Panel

FortiOS

Control all the security and networking capabilities across the entire FortiGate platform with one intuitive operating system. Reduce operating expenses and save time with a truly consolidated next generation security platform.

- A truly consolidated platform with one OS for all security and networking services for all FortiGate platforms.
- Industry-leading protection: NSS Labs Recommended, VB100, AV Comparatives and ICSCA validated security and performance.
- Control thousands of applications, block the latest exploits, and filter web traffic based on millions of real-time URL ratings.
- Detect, contain and block advanced attacks automatically in minutes with integrated advanced threat protection framework.
- Solve your networking needs with extensive routing, switching, WiFi, LAN and WAN capabilities.
- Activate all the ASIC-booster capabilities you need on the fastest firewall platform available.



For more information, please refer to the FortiOS data sheet available at www.fortinet.com

SERVICES

FortiGuard™ Security Services

FortiGuard Labs offers real-time intelligence on the threat landscape, delivering comprehensive security updates across the full range of Fortinet's solutions. Comprised of security threat researchers, engineers, and forensic specialists, the team collaborates with the world's leading threat monitoring organizations, other network and security vendors, as well as law enforcement agencies:

- **Real-time Updates** — 24x7x365 Global Operations research security intelligence, distributed via Fortinet Distributed Network to all Fortinet platforms.
- **Security Research** — FortiGuard Labs have discovered over 170 unique zero-day vulnerabilities to date, totaling millions of automated signature updates monthly.
- **Validated Security Intelligence** — Based on FortiGuard intelligence, Fortinet's network security platform is tested and validated by the world's leading third-party testing labs and customers globally.



For more information, please refer to <http://forti.net/guard>

FortiCare™ Support Services

Our FortiCare customer support team provides global technical support for all Fortinet products. With support staff in the Americas, Europe, Middle East and Asia, FortiCare offers services to meet the needs of enterprises of all sizes:

- **Enhanced Support** — For customers who need support during local business hours only.
- **Comprehensive Support** — For customers who need around-the-clock mission critical support, including advanced exchange hardware replacement.
- **Premium Services** — For global or regional customers who need an assigned Technical Account Manager, enhanced service level agreements, extended software support, priority escalation, on-site visits and more.
- **Professional Services** — For customers with more complex security implementations that require architecture and design services, implementation and deployment services, operational services and more.



For more information, please refer to <http://forti.net/care>

SPECIFICATIONS

	FORTIGATE 30E	FORTIWIFI 30E
Hardware Specifications		
GE RJ45 Switch Ports	4	
GE RJ45 WAN Port	1	
USB Port	1	
Console (RJ45)	1	
Wireless Interface	—	802.11 a/b/g/n
Internal Storage	16 GB	
System Performance		
Firewall Throughput	950 Mbps	
Firewall Latency (64 byte UDP packets)	130 µs	
Firewall Throughput (Packets Per Second)	180 Kpps	
Concurrent Sessions (TCP)	900,000	
New Sessions/Second (TCP)	15,000	
Firewall Policies	5,000	
IPsec VPN Throughput (512 byte packets)	75 Mbps	
Gateway-to-Gateway IPsec VPN Tunnels	20	
Client-to-Gateway IPsec VPN Tunnels	250	
SSL-VPN Throughput	35 Mbps	
Concurrent SSL-VPN Users (Recommended Maximum)	80	
IPS Throughput (HTTP / Enterprise Mix)	600 / 240 Mbps	
SSL Inspection Throughput	200 Mbps	
NGFW Throughput	150 Mbps	
CAPWAP Throughput	950 Mbps	
Virtual Domains (Default / Maximum)	5 / 5	
Maximum Number of FortiAPs (Total / Tunnel Mode)	2 / 2	
Maximum Number of FortiTokens	20	
Maximum Number of Registered FortiClients	200	
High Availability Configurations	Active/Active, Active/Passive, Clustering	

	FORTIGATE 30E	FORTIWIFI 30E
Dimensions		
Height x Width x Length (inches)	1.61 x 8.27 x 5.24	
Height x Width x Length (mm)	41 x 210 x 133	
Weight	1.982 lbs (0.899 kg)	2.008 lbs (0.911 kg)
Form Factor	Desktop	
Environment		
Power Required	100–240V AC, 60–50 Hz (External DC Power Adapter)	
Maximum Current	100V / 0.6A, 240V / 0.4A	
Power Consumption (Average / Maximum)	13 / 15 W	19 / 16 W
Heat Dissipation	52 BTU/h	66 BTU/h
Operating Temperature	32–104°F (0–40°C)	
Storage Temperature	-31–158°F (-35–70°C)	
Humidity	20–90% non-condensing	
Operating Altitude	Up to 7,400 ft (2,250 m)	
Compliance		
Regulatory Compliance	FCC Part 15 Class B, C-Tick, VCCI, CE, UL/cUL, CB	
Certifications		
	ICSA Labs: Firewall, IPsec, IPS, Antivirus, SSL-VPN	

Note: All performance values are "up to" and vary depending on system configuration. IPsec VPN performance is based on 512 byte UDP packets using AES-256+SHA1. NGFW performance is measured with Flow AV (Full Mode). IPS and Application Control enabled, based on Enterprise Traffic Mix. SSL Inspection is measured with IPS enabled and HTTP traffic, using TLS v1.2 with AES254-SHA. CAPWAP performance is based on 1444 byte UDP packets.

ORDER INFORMATION

Product	SKU	Description
FortiGate 30E	FG-30E	5x GE RJ45 ports (including 1x WAN port, 4x Switch ports), Maximum managed FortiAPs (Total / Tunnel) 2 / 2.
FortiWiFi 30E	FWF-30E	5x GE RJ45 ports (including 1x WAN port, 4x Switch ports), Wireless (802.11a/b/g/n), Maximum managed FortiAPs (Total / Tunnel) 2 / 2.
Optional Accessory		
Rack Mount Tray	SP-RACKTRAY-01	Rack mount tray for supported products.



GLOBAL HEADQUARTERS
Fortinet Inc.
899 Kifer Road
Sunnyvale, CA 94086
United States
Tel: +1.408.235.7700
www.fortinet.com/sales

EMEA SALES OFFICE
120 rue Albert Caquot
06560, Sophia Antipolis,
France
Tel: +33.4.8987.0510

APAC SALES OFFICE
300 Beach Road 20-01
The Concourse
Singapore 199555
Tel: +65.6513.3730

LATIN AMERICA SALES OFFICE
Prol. Paseo de la Reforma 115 Int. 702
Col. Lomas de Santa Fe,
C.P. 01219
Del. Alvaro Obregón
México D.F.
Tel: 011-52-(55) 5524-8480